



SAFETY TIPS

Wear bright colors, visibility is key! Avoid busy streets where possible and always use bike lanes when they are provided.

Never pass vehicles on the right. Drivers may suddenly turn into driveways or side streets.

Be aware of parked cars, as motorists may open doors in your path.

Give yourself room to react.

Look for signage indicating preferred bike routes to common destinations. They have been chosen for reasons that will help keep you safe!



RULES TO FOLLOW

Wear bright colors, visibility is key! Avoid busy streets where possible and always use designated bike paths. Please follow all rules of the road.

Be considerate

- Ride positively and stay clear of uneven road edges but with consideration for other road-users. To allow vehicles to overtake safely, leave gaps for them to pull into and move into single file when necessary and safe to do so. Never ride more than two abreast.
- Cycle only on the waymarked network of approved roads, and designated routes.
- Use this map to plan your route. You can visit our website for a larger map at www.paysonrimcountry.com. Got to the trails section of the site.
- Be polite to other cyclists, motorists, pedestrians and residents.
- When passing people and animals, use your bell or call out a warning and allow them plenty of room. Be prepared to stop if necessary.
- Do not drop litter or feed the animals; human food and litter are a danger to them.

- Respect the roadways and other peoples' property.
 - Close gates behind if necessary.
- Be safe**
- Pass animals slowly and to one side if possible.
 - Take extra care near horse riders; a kick or fall from a horse could be fatal. Be prepared to stop. Use your bell or call out a friendly warning well in advance. When it is safe, pass wide and at walking pace, to one side only. Look out for any reaction from the horse.
 - Keep to a safe speed, on and off road, particularly on narrow lanes, steep hills and bends. Look out for pot holes, poor surfaces and cattle guards.
 - Look out for and obey safety signs. Do not pass large vehicles and trailers until you know it is safe to do so.
 - Ensure you are visible by wearing bright or reflective clothing. Use lights after dark and in poor daytime visibility.
 - Avoid the use of earphones.

EMERGENCY CONTACTS

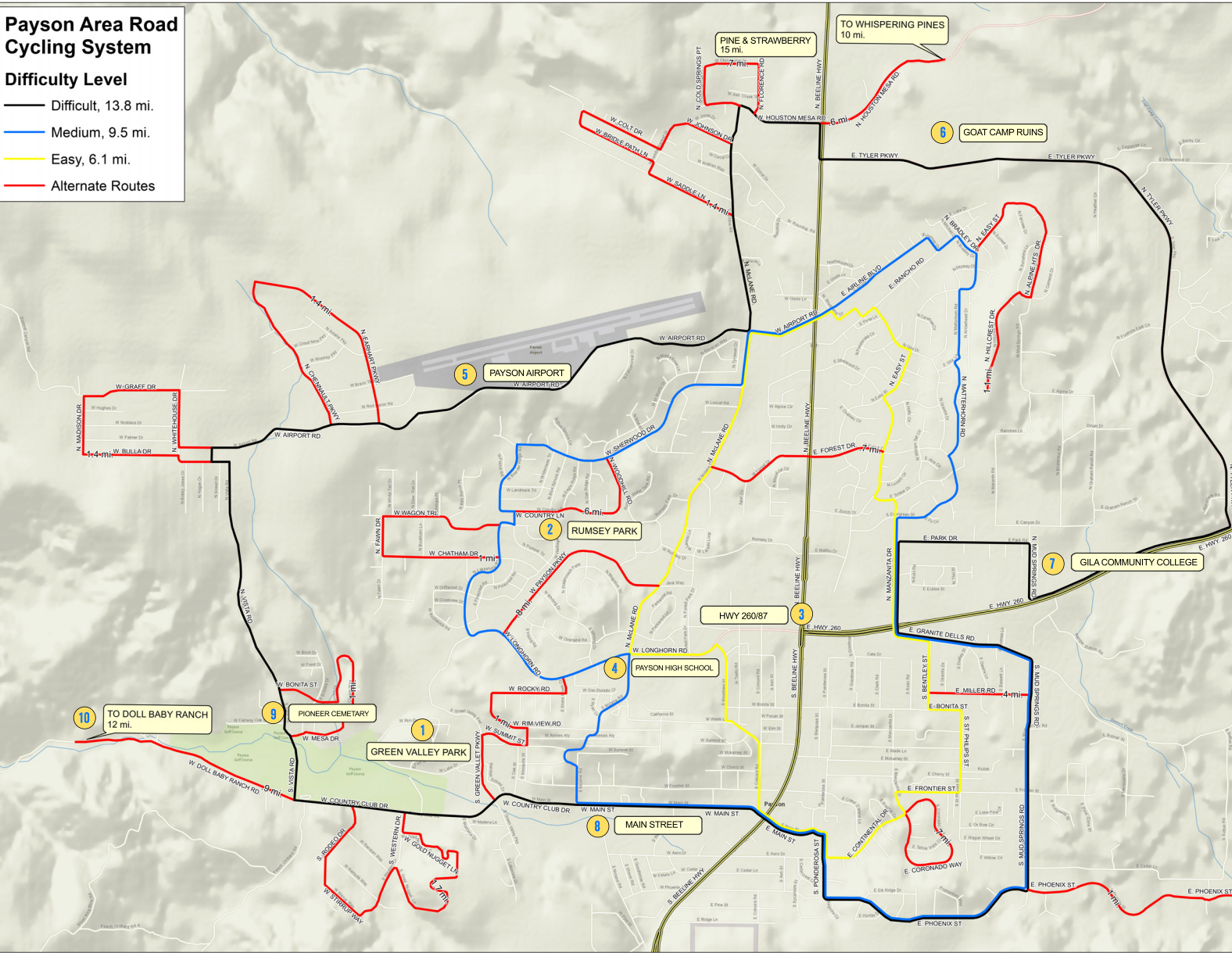
In the event you may have an emergency here are some contacts that you may call for help.

- For life threatening emergency always call (911)
- Payson Fire Department (928) 472-5120
- Payson Police Department (928) 474-5177
- Banner Payson Medical Center (928) 471-3222



Payson Area Road Cycling System

- Difficulty Level**
- Difficult, 13.8 mi.
 - Medium, 9.5 mi.
 - Easy, 6.1 mi.
 - Alternate Routes



Payson is a bicyclist's paradise, offering entry to some of the best-kept secrets in the State of Arizona. Inviting weather year-round. Unique wildlife. Breathtaking mountains, lush rural areas, and quaint Small-Town charm can all be found on the paved roads described in this brochure.

Leisurely rides through Green Valley Park offer glimpses of wildlife such as American bald eagles, elk and an engaging riparian area. Two-wheel excursions along the tree lined streets of Payson take you on a tour of history with access to historic main street, the Pioneer Cemetery and the Zane Grey Cabin in Green Valley Park.

So check the tire pressure, strap on your helmet, fill the water bottle, scan the skyline and prepare to Bike! Join the Adventure Where We Live!

POINTS OF INTEREST

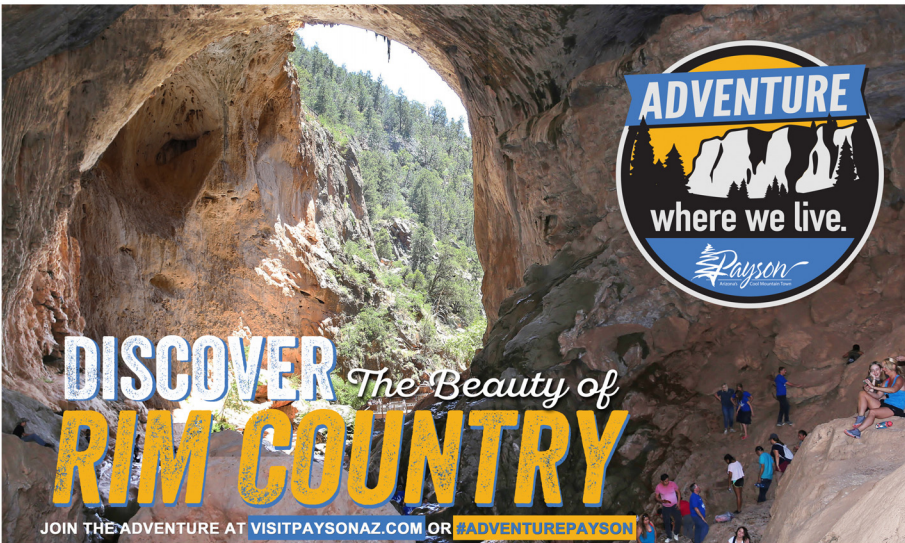
- 1 GREEN VALLEY PARK**
Green Valley Park is part of Arizona's Urban Fishing Program and is recognized nationally as one of the best in the country. Surrounded by 3 lakes, rolling hills, mature trees, an entertainment amphitheater and walking paths Green Valley Park is a great place to catch a fish, watch a concert, experience the Payson Homestead 4th of July or just relax. It is also home to the Rim Country Museum and the Zane Grey Cabin.
- 2 RUMSEY PARK**
If sports are what you have in mind then Payson's Rumsey park is where to find your adventure. Rumsey park has softball fields, soccer fields, skate park, dog park, Taylor pool, tennis and pickleball courts, outdoor basketball courts and ramadas. It is also where the Payson Public Library is located.
- 3 HIGHWAY 260 & 87 INTERCHANGE**
260 & 87 form the main economic center of the Town of Payson. Located close by you will find restaurants, banks, grocery stores & much more. Keep going North and you end up in Pine and Strawberry. If you go East you will discover the communities of Christopher Creek, Kohl's Ranch, Camp Tontozona and Heber.
- 4 PAYSON HIGH SCHOOL**
Home to the Payson Longhorns, the High School is the pride of Payson. On the campus you can enjoy walking or running on the track, watching a sporting event or attending one of the many special events that happen there.
- 5 PAYSON AIRPORT**
At an elevation of 5,157 feet and surrounded by rolling hills and mountain vistas, the Payson Airport is one of the best places to see the Mogollon Rim. Bike riders will enjoy a steep climb followed by amazing views. While you're there eat at the Crosswinds Restaurant, enjoy the view and watch the planes take off.
- 6 GOAT CAMP TRAILHEAD**
Goat Camp is located off of Tyler Parkway in Payson. The hill, once part of a goat ranch based out of Mesa del Caballo, harbors the remains of a Salado village inhabited for 500 years. Bikers will enjoy great views and some history to boot.
- 7 GILA COMMUNITY COLLEGE**
Gila Community College serves the Town of Payson, offering many great classes and other accredited courses of study. Right next to the campus is the Jimmy Harris Trail. A short but beautiful trail that you can either ride your bike on or go for a brisk walk.
- 8 MAIN STREET**
At one end is the Sawmill Crossing complex and at the other, award-winning Green Valley Park. Besides a host of shopping opportunities for antiques, gifts, scrapbooking supplies, books and other treasures, Main Street features several special museums, family restaurants and a historic saloon (The Ox Bow).
- 9 PIONEER CEMETERY**
Hundreds of graves are scattered over nearly five acres of land that is shaded by oak and juniper trees. Wildflowers grow in abundance and graves display a rich history of Payson's past.
- 10 DOLL BABY RANCH ROAD**
Looking to get out and ride on the open road? This is where you can put the "Pedal" down. Complete with rolling hills and breathtaking scenery this ride is not for the faint of heart. Be ready for a challenge as you will ascend and descend several times. The view is worth the burn if you want a good workout.

GET SOCIAL WITH US

Share your adventures with us and all your friends!
#adventurepayson



Photos by DJ Craig | Map Designed By Razor Thin Media, LLC - All Rights Reserved



WELCOME TO THE PAYSON AREA TRAILS SYSTEM

JOIN THE ADVENTURE



WHAT IS PATS?

The Payson Area Trails System (PATS) is an in-progress interconnecting trails system connecting existing USFS trails on the periphery of Payson with detached pathways and routes adjacent to Payson neighborhood streets. When completed, PATS will include approximately 20 miles of existing USFS trails and 20+ future miles within Payson town limits. PATS routes will be primarily non-motorized use only, although the USFS Travel Management Plan, scheduled to be completed in the near future, will designate specific motorized trails.

BENEFITS OF PATS IN THE RIM COUNTRY

PATS provides great opportunities for trail users in Payson. In-town routes provide safe recreational and commuter travel opportunities in all directions, connecting east to west and north to south areas of Payson. Routes as completed, will be signed and easy to navigate. Centers of Interest will provide ample parking areas for easy major trail access.

For a more challenging and rustic recreational experience, PATS incorporates specific USFS trails of various levels of difficulty with their own unique offerings (see map below). These trails will be jointly signed by the Town of Payson and the USFS to assist trail users in safe navigation on US Forest Service lands.

TRAIL SAFETY & ETIQUETTE

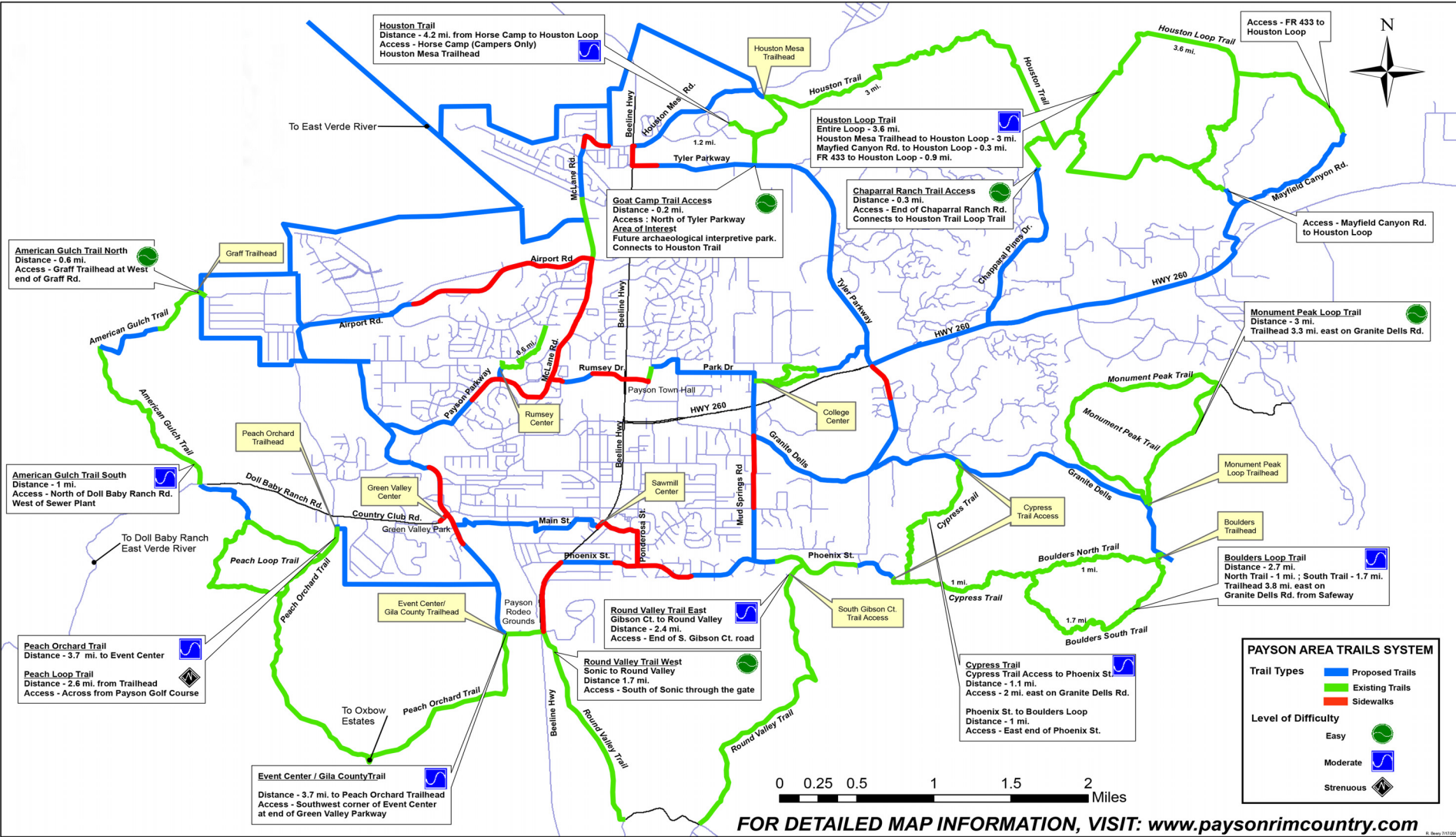
- Use all Payson Area Trails courteously.
- Observe all trail signs, including permitted trail user types.
- Select trails within your ability level - many trails are quite strenuous.
- Be aware of changing weather and terrain conditions, which can change quickly, especially during monsoon season.
- Consider how you can leave the trail better than when you entered - pick up rather than leaving litter. "Wheels yield to heels." Bicyclists yield to all other users. Hikers, runners and walkers yield to horse back riders.
- Pets are permitted, but must be under the owners' control and on a leash at all times in Payson town limits. Clean up dog waste and use extreme care to avoid conflicts between dogs and horses.
- Never stop where you obstruct the trail or are not visible to others.
- Never interact with wild animals.
- Respect landowner privacy - many of our trails pass through residential areas.
- If you pass through a gate, close it behind you.



HAVE QUESTIONS? CONTACT THE PARKS, RECREATION & TOURISM DEPARTMENT @ 1000 W. COUNTRY CLUB DR. PAYSON, AZ 85541 | PHONE: (928) 472-5110 | FAX: (928) 472-8412 | WEB: WWW.PAYSONRIMCOUNTRY.COM



BOULDERS LOOP TRAIL - SHOWCASES OUTCROPPINGS OF LARGE BOULDERS, SCENIC MOUNTAIN VISTAS AND MORE.



FOR DETAILED MAP INFORMATION, VISIT: www.paysonrimcountry.com

TRAIL HIGHLIGHTS

- BEST QUAD TRAILS - PEACH ORCHARD/EVENT CENTER AND AMERICAN GULCH TRAILS
- BEST MOUNTAIN BIKING TRAILS - MONUMENT PEAK AND BOULDERS LOOP TRAILS
- BEST EQUESTRIAN TRAILS - ROUND VALLEY EAST, HOUSTON AND PEACH ORCHARD/EVENT CENTER
- BEST HIKING TRAILS - ALL OF THEM!

- MOST CHALLENGING - PEACH LOOP TRAIL (THE SOUTH PORTION)
- EASIEST TRAIL - JIMMY HARRIS/COLLEGE CENTER TRAIL
- MOST SCENIC TRAILS - BOULDERS LOOP AND PEACH ORCHARD TRAILS
- EASIEST TRAIL TO ACCESS IN PAYSON - RUMSEY PARK CENTER TRAIL



WHERE "TAKE A HIKE"

Has a whole new meaning

JOIN THE ADVENTURE AT PAYSONRIMCOUNTRY.COM OR [#ADVENTUREPAYSON](https://twitter.com/ADVENTUREPAYSON)